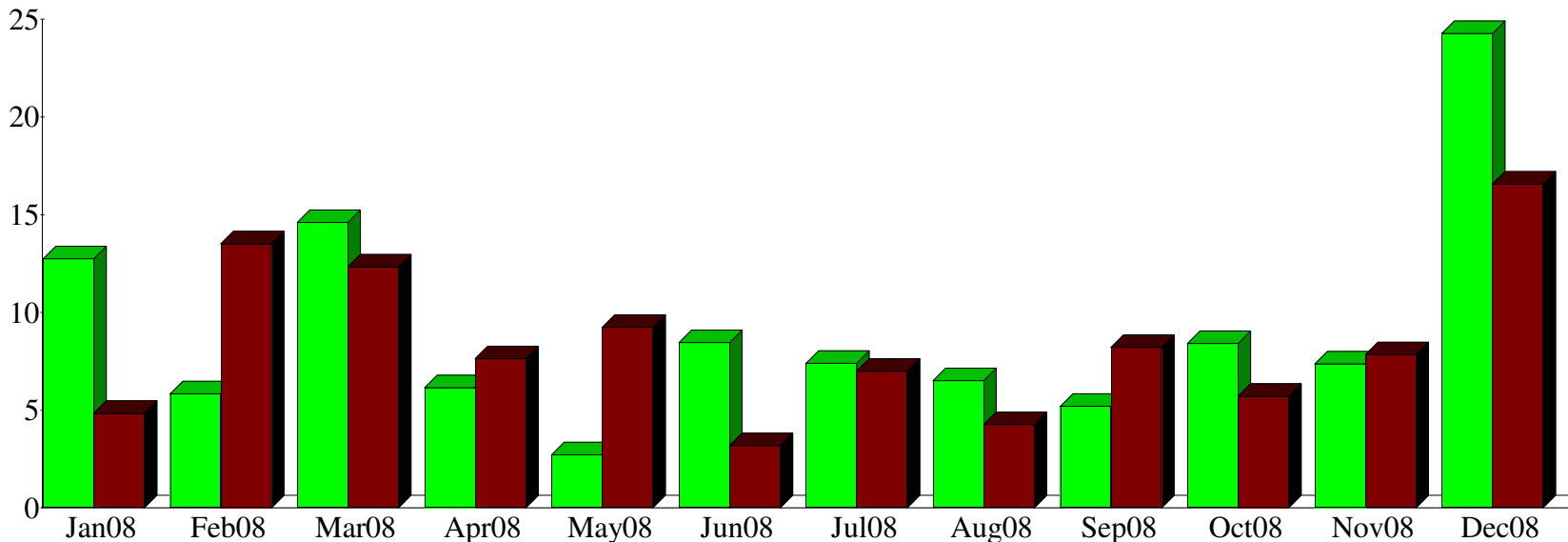


Income and Expense by Month
January through December 2008

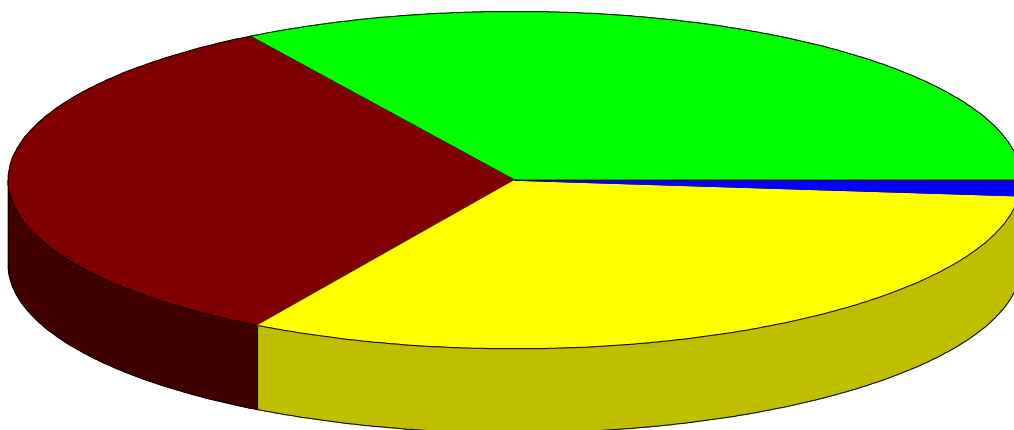


\$ in 1,000's



Income Summary
January through December 2008

410 · Donations	%33.78
420 · Fundraising (Form 990 line 1a)	32.81
400 · Adoptions (All adoptions)	32.12
430 · Grants (990 line 1a)	1.29
Total	\$109,698.01



By Account