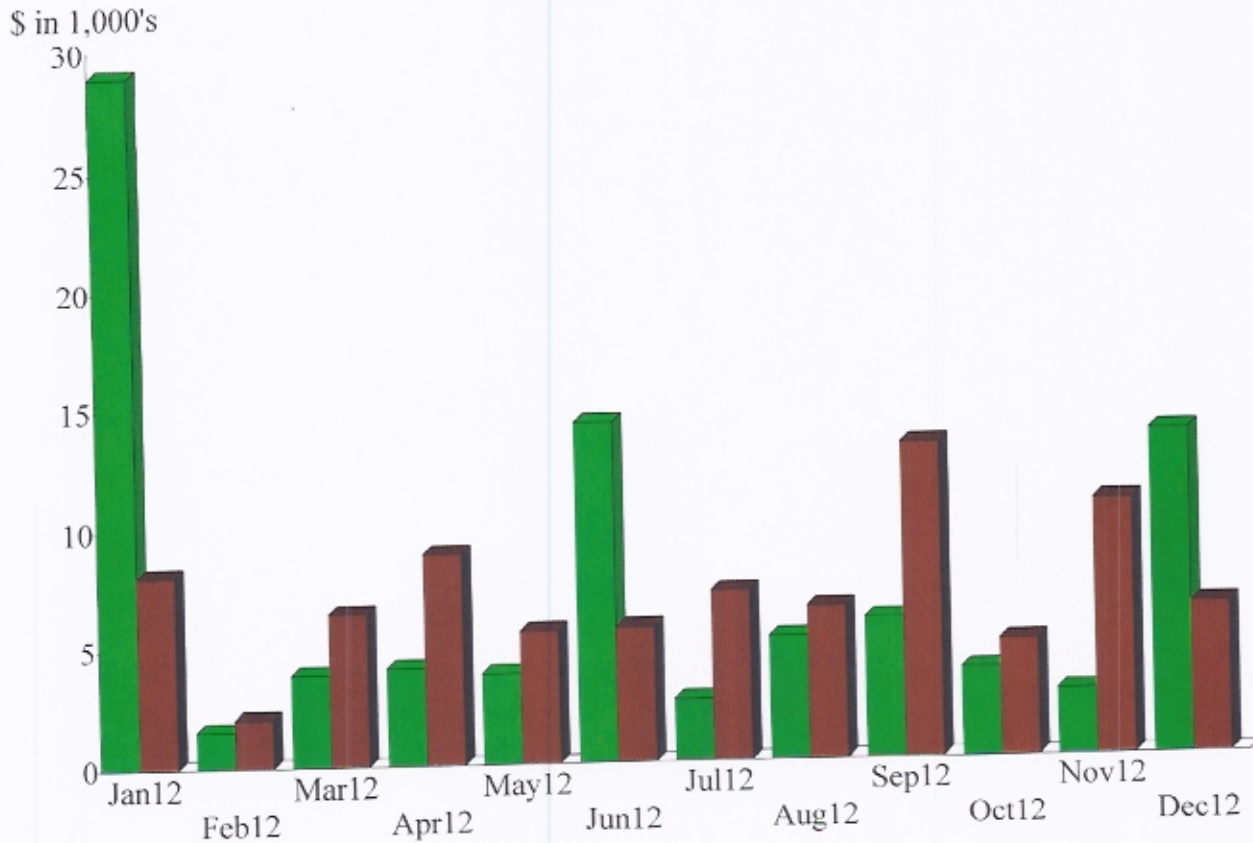


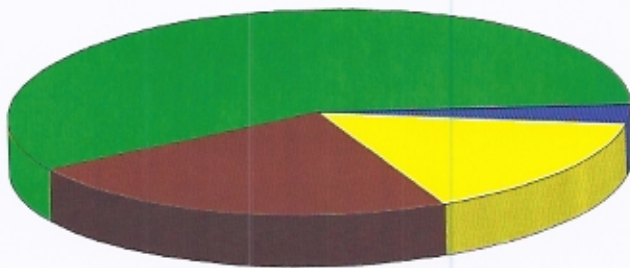
Income and Expense by Month
January through December 2012

Income
Expense



Income Summary
January through December 2012

| | |
|--------------------------------------|--------------------|
| 420 · Fundraising (Form 990 line 1a) | %58.36 |
| 410 · Donations | 23.31 |
| 400 · Adoptions (All adoptions) | 15.60 |
| 430 · Grants (990 line 1a) | 2.72 |
| Total | \$90,084.42 |



By Account